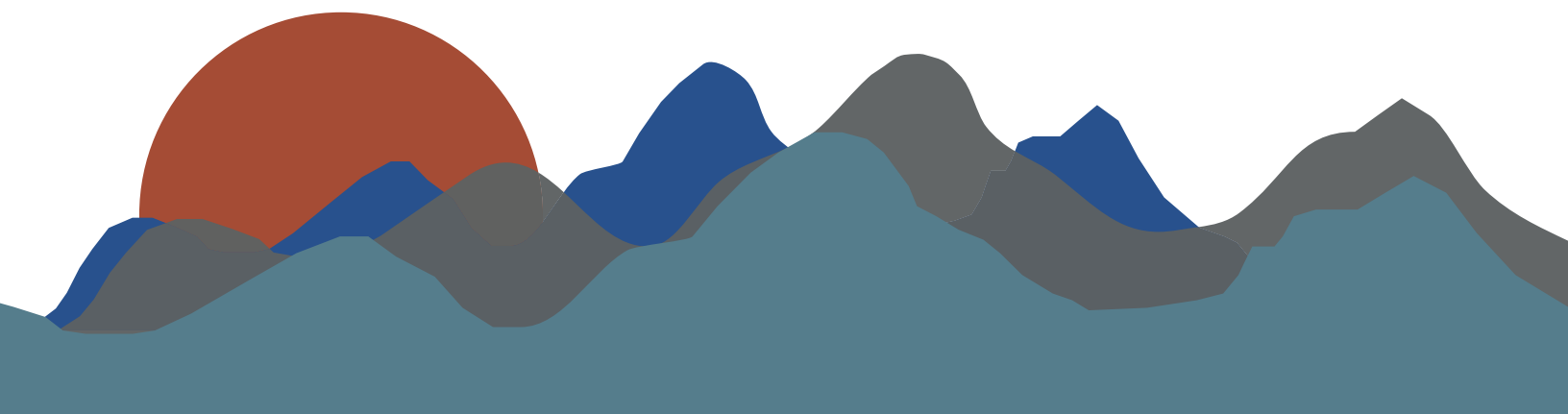


Age-Friendly Carbon County

Newsletter - Fall 2020

>>> In This Issue

- CART, Our New Transportation Service!
- CART, Explained
- Meet the New CART Coordinator!
- Looking for Qualified Van Drivers
- How can CART Benefit you?
- Considering COVID



CART, Our New Transportation Service!

We at the Red Lodge Area Community Foundation are excited to announce that Carbon County Area Ride and Transit or CART is very close to hitting the road! This issue of the Age-Friendly Carbon County newsletter is devoted to transportation, especially the introduction of CART, our new public transit service.

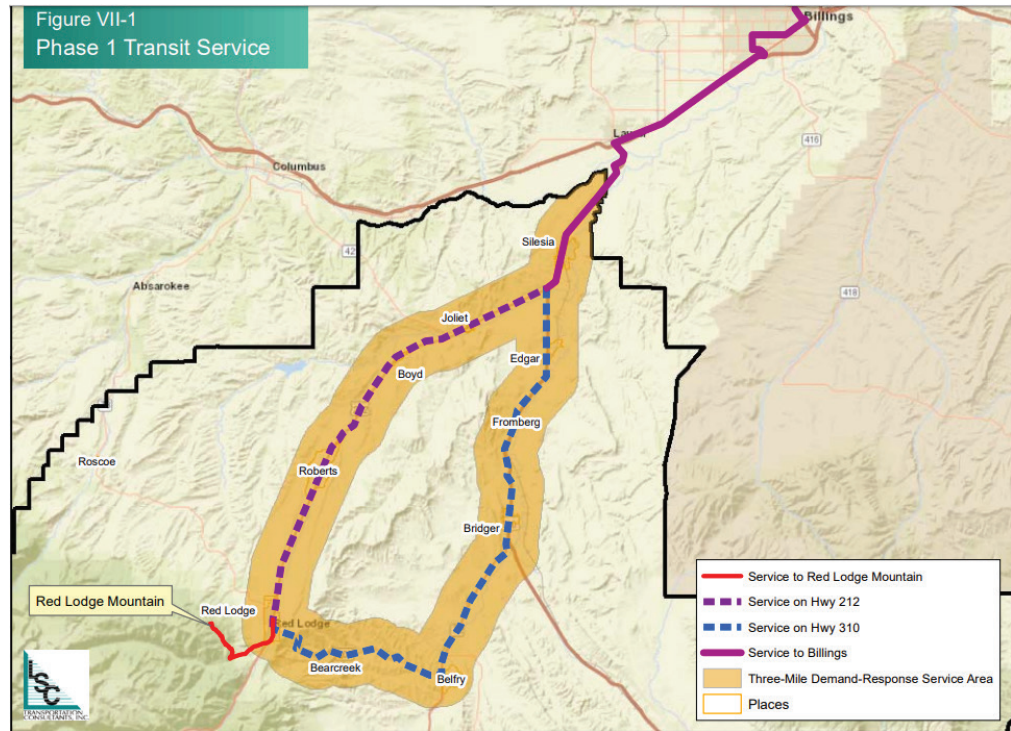
Transportation has been identified as a primary unmet need for folks in Carbon County. The desire for a public transit service was found through multiple surveys and assessments conducted by The Carbon County Growth Assessment, Beartooth Billings Clinic and The Red Lodge Area Community Foundation. You may remember completing a Foundation survey a couple of years ago. We used AARP's Eight Domains of Livability as a guide to determine opportunities for improvement to help Carbon County citizens better age in their place of choice. Transportation came out on top county-wide. We listened and CART is on its way!

The goal for CART is to provide public county-wide transportation at no or low cost to citizens. The aim is to fill a community need while working with existing transportation resources to enhance, not duplicate services. It is also a priority to focus transportation on access to local services and businesses in Carbon County. The trip to Billings will be primarily for riders to see medical specialists not found in our local clinics. Turn the page to learn more! We hope to see you on the road soon.

»»» CART, Explained

We will learn much from the first few months of CART operation. We will listen closely to feedback received and make any necessary adjustments to best serve our community. Below is information regarding Phase 1 of CART.

- Call for a ride 24 hours prior to an appointment
- Days of service: Tuesday, Wednesday, Thursday
- Hours of operation: 8:00 am to 4:30 pm
- Service Area: See route map on right
- You will be picked up at your door if you live within three miles of the highway
- Fare: Initially, all trips are free
- Twice monthly trips to Billings will occur after our second vehicle arrives
- Start Date: January 26th
- CART will follow strict COVID-19 guidelines
- Call 406 426-4506 to learn more



Comparing Local Transit Services

Community Care	CART	Red Lodge Tour & Taxi
Mobile health project through Red Lodge Fire & Rescue	Public transit service	Taxi & shuttle service
Rides to medical appointments	Rides for appointments, errands, meetings, social needs and more	Airports, group charters, trailhead shuttles and Beartooth Highway
Based on referrals by health care and community providers	No referral needed. Call for a ride	No referral needed. Call for a ride
One-on-One personal care	Ride may be shared with others	One-on-One rides or group shuttles
EMS based medical support	Drivers not trained to offer medical support outside of CPR	Drivers not trained to offer medical support
Fits clients schedule/needs	Call 24 hours in advance for pick up	Fits clients schedule/needs
Fee for service	No fee if ride is within Carbon County	Fee for service
406 425-0069 or 406 425-3342	406 426-4506	406 425-3091

»»» Meet the New Cart Coordinator!

The Red Lodge Area Community Foundation (RLACF) recently hired David Kallenbach to serve as the Transportation Coordinator for CART. The RLACF and David will soon be providing rides to medical appointments, senior centers, civic functions, and more. We look forward to starting transit operations to the communities of Carbon County in January.

David is no stranger to program development. As the former Director of the Absaroka-Beartooth Wilderness Foundation (ABWF), he built from scratch a nonprofit known for its 'boots-on-the-ground' efforts benefitting A-B Wilderness lands. While with Outward Bound, David lead transportation logistics—overseeing a fleet of vehicles, numerous staff, and complicated schedules of outdoor adventure trips. He was also a high school science teacher and a Ranger in the National Park Service. As he embarks on his newest challenge David knows, "We've got a lot of work to do to figure out how to best reach out to folks from towns like Belfry, Boyd, Bearcreek, Edgar, and Fromberg to let them know this program is here for them and that we're ready to meet their transportation challenges."

David has lived in the Red Lodge area for 20 years. He appreciates its natural beauty, recreational opportunities, economic diversity, and pace of life. "I really don't want to see Montana become like the Front Range of Colorado where I grew up—overrun and unrecognizable from its past. If we are to maintain the rural charm of this place, we also need the resources and services that make life in this area more sustainable. That's why I am so excited to help develop CART—a public transportation system that enhances rural communities."

David enjoys hiking, camping, and backpacking, as well as visiting wild and little-known places, dog walks, snowboarding, reading, and photography. Welcome, David. We look forward to working and riding with you.



Looking for Qualified Van Drivers for CART

RLACF is seeking to hire a responsible and safety-oriented driver, who is committed to providing a high degree of care to riders of all ages and abilities. The driver would operate a specially-equipped Dodge Caravan or a 13-passenger van between the rural communities along Highways 212 and 310 in Carbon County, and into Billings, year-round, in variable weather and road conditions. Job pays \$15-\$17/hr., DOE. This position is three days per week (24 hrs.) Driver must have a clean driving record and is subject to state-mandated drug and alcohol testing. Training will be provided. No special license is needed. Contact David at 406 426-4506.

How Can CART Benefit YOU?

As we prepare to roll out CART, reactions from people all over the county express enthusiasm for a transit service and suggest a variety of ways CART might be utilized.

Karen Ulrickson of Fromberg, said that, "Being from Carbon County, over the past 16 years the biggest need I've heard about, and it comes up time and time again, is the need for public transportation." She'd particularly like to see the Assisted Care facilities have regular access to a transit system.

Nancy Monforton from the Joliet library discussed not only improving access for people to get to local libraries, but also how CART could help the three libraries in Carbon County share books and other resources on a weekly basis.

For Jessie Schwend, who grew up in Joliet and is the Nurse Manager at Riverstone Health, it's all about finding new resources to help people. "I now see it on a personal level, having a family member who no longer drives. I'm so busy at the clinic these days, it's hard for me to get away to help get her around as much as I want."

Don Redfoot who sits on the Transportation Advisory Committee (TAC) pointed out how just getting to the grocery store for some people could be life-changing!

Gretchen Nolan from Luther emphasized the social benefits of public transport. "In Carbon County there's the extreme isolation factor—people are being starved of social contact. There's a real health benefit to getting together for socializing—i.e., movie nights, attending civic meetings, meals and events at the senior centers, programs at the Roosevelt Center, etc. The service will be a big success if fewer people are homebound."

Bill Foisy of Red Lodge pointed out that when organizations hold regular meetings or special events, they're often excited if 30 people attend. "But imagine all those who couldn't attend because they are shut-in, without the means to get around—our events could have 10 more folks attend just because there's a ride that might get them there!" Bill wanted to emphasize, "This is a public service to the entire county—I'm beyond excited!"

- Thank you to the Montana Department of Transportation, Montana Healthcare Foundation and HUB Insurance for financial support of CART.
- For additional copies of the newsletter, contact Therese at 446-2820 or therese@rlacf.org



Considering COVID

The COVID-19 pandemic may raise concerns among those who want to use CART services. The primary goal of the Red Lodge Area Community Foundation is to get you where you want to go safely and with minimal risk of exposure to the coronavirus. We are currently working with local public health authorities and state transportation experts to develop state-of-the-art protocols regarding operations, seating arrangements, cleaning procedures, and ridership requirements to assure the safety of riders as well as drivers.